



Pony Testing International Group

报告编号(Report ID): 1011253-072a

锂电池UN38.3测试报告

Lithium Battery UN38.3 Test Report

样品名称

LARGE 18650 3.7V 2200mAh

(Samples)

委托单位

Dong Guan Large Electronics Co., Ltd.

(Client)

生产单位

Dong Guan Large Electronics Co., Ltd.

(Manufacturer)

PONY 谱尼测试

Pony Testing International Group

www.ponytest.com



Pony Testing International Group

I、SAMPLE DESCRIPTION

Sample Name	LARGE 18650 3.7V 2200mAh		Battery Type	LARGE 18650 3.7V 2200mAh	
Client	Dong Guan Large Electronics Co., Ltd.				
Manufacturer	Dong Guan Large Electronics Co., Ltd.				
Nominal Voltage	3.7V	Rated Capacity	2200mAh	Limited Charge Voltage	4.2V
Charge Current	1100mA	Maximum Continuous Charge Current	2200mA	End Charge Current	22mA
Cut-off Voltage	2.75V	Maximum Discharge Current	2200mA	Use	---
Cells Number	1PCS	Cell Model	ICR18650	Rated Capacity	2200mAh
Manufacturer of cell		Dong Guan Large Electronics Co., Ltd.			
Chemical component		Fe, Ni, Cr, Cu, Al, Graphite, LiCoO ₂			
Client date	2010-11-25		Finished date	2010-12-14	

II、STANDARD

Recommendations on transport of dangerous goods, manual of test and criteria, section 38.3 lithium batteries.

III、TEST ITEM

- | | |
|------------------------|--------------------------------|
| 1. Altitude simulation | 5. External short circuit |
| 2. Thermal test | 6. Impact (for component cell) |
| 3. Vibration | 7. Overcharge |
| 4. Shock | 8. Forced discharge (for cell) |

IV、CONCLUSION

ITEM	SAMPLE NUMBER	STANDARD	CONCLUSION
Altitude simulation	N1~N4 C1~C4	UN38.3	PASS
Thermal test			PASS
Vibration			PASS
Shock			PASS
External short circuit			PASS
Impact (for component cell)	N9~N13		PASS
Overcharge	N5~N8 C5~C8		PASS
Forced discharge(for cell)	---		N/A (Not applicable)

The submitted battery and component cell were complied with the stated requirements of UN38.3.

Technique Controller:

Approval Date: December 14, 2010

本检测单位保证检测的客观公正性，并对委托单位的商业秘密履行保密义务；委托单位对样品的代表性和资料的真实性负责，本检测单位仅对样品负责，委托单位对于检测结果的使用、使用所产生的直接或间接损失及一切法律后果，本检测单位不承担任何经济和法律后果；本《检测报告》如无PONY专用章和批准人签字或被复制，则无效；任何对本《检测报告》未经授权的部分或全部转载、篡改、伪造或复制行为都是违法的，将被追究民事、行政甚至刑事责任。

防伪说明：(1)《检测报告》的报告编号是唯一的，即每一个报告编号仅对应唯一的《检测报告》；
(2)《检测报告》采用特制防伪纸张印制，纸张表面带有“PONY”防伪纹路，该防伪纹路不支持复印，即复制件不会带有“PONY”防伪纹路；
(3)《检测报告》采用的防伪纸张内部亦加带有高科技“PONY”防伪水印，只有在验钞机等紫外线照射下方可见由无色或光防伪字；
(4)《检测报告》所盖防伪骑缝章中的一部分加盖于本检测单位的留底报告上，《检测报告》与本检测单位留底报告的骑缝章应拼合完整无缺。

www.ponytest.com ☎Hotline 400-819-5688

Add: Yingzhi Building, No. 49-3, Suzhou Road, Haidian District, Beijing	Building 35, No. 680, Guiping Road, Xuhui District, Shanghai	Building 601 Zhongxing Industry City, Chuangye Road, Nanshan District, Shenzhen	No. 2-1, Keyuan West Road 3, Hi-tech Park, Laoshan District, Qingdao
Tel: (010)82618116	(021)64831999	(0755)26050909	(0532)88706866
Fax: (010)82619629	(021)64856403	(0755)26068336	(0532)88706877
E-mail: pony@ponytest.com	cs@ponytest.com	sz@ponytest.com	qd@ponytest.com



Pony Testing International Group

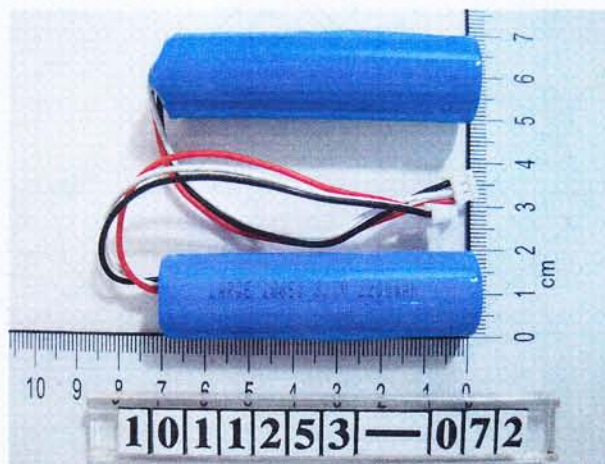
Notes:

Batteries of N1~N8 are full charged after one cycle;

Component cells of N9~N13 are 50% charged after one cycle;

Batteries of C1~C8 are full charged after fifty cycles.

V、PHOTO OF THE SAMPLE



Authenticate the photo on original report only

本检测单位保证检测的客观公正性，并对委托单位的商业秘密履行保密义务；委托单位对样品的代表性和资料的真实性负责，本检测单位仅对样品负责。委托单位对于检测结果的使用、使用所产生的直接或间接损失及一切法律后果，本检测单位不承担任何经济和法律责任；本《检测报告》如无PONY专用章和批准人签字或被复制，则无效；任何对本《检测报告》未经授权的部分或全部转载、篡改、伪造或复制行为都是违法的，将被追究民事、行政甚至刑事责任。

防伪说明：(1)《检测报告》的报告编号是唯一的，即每一个报告编号仅对应唯一的《检测报告》；
(2)《检测报告》采用特制防伪纸张印制，纸张表面带有“PONY”防伪纹路，该防伪纹路不支持复印，即复制件不会带有“PONY”防伪纹路；
(3)《检测报告》采用的防伪纸张内部亦加带有高科技“PONY”防伪水印，只有在验钞机等紫外线照射下方可见出无色荧光防伪字样；
(4)《检测报告》所盖防伪骑缝章中的一部分加盖于本检测单位的留底报告上，《检测报告》与本检测单位留底报告的骑缝章应拼合完整无缺。



Pony Testing International Group

VI、 TEST METHOD

Test 1 to 5 must be conducted in sequence on the same battery.

In order to quantify the mass loss, the following procedure is provided:

$$\text{Mass loss(\%)} = (M1-M2) / M1 \times 100\%$$

Where M1 is the mass before the test and M2 is the mass after the test. When mass loss does not exceed the value in table blow, it shall be considered as "no mass loss".

Mass M of cell or battery	Mass loss limit
$M < 1\text{g}$	0.5%
$1\text{g} < M < 5\text{g}$	0.2%
$M \geq 5\text{g}$	0.1%

In test 1 to 4, cells and batteries meet this requirement if there is no mass loss, no leakage, no venting, no disassembly, no rupture and no fire and if the open circuit voltage of each test cell or battery after testing is not less than 90% of its voltage immediately prior to this procedure. The requirement relating to voltage is not applicable to test cells and batteries at fully discharged states.

1. Altitude simulation

Test batteries or cells shall be stored at a pressure of 11.6 kPa or less for at least six hours at ambient temperature($20 \pm 5^\circ\text{C}$).

2. Thermal test

Test cells and batteries are to be stored for at least six hours at a test temperature equal to $75 \pm 2^\circ\text{C}$, followed by storage for at least six hours at a test temperature equal to $-40 \pm 2^\circ\text{C}$. The maximum time interval between test temperature extremes is 30 minutes. This procedure is to be repeated 10 times, after which all cells and batteries are to be stored for 24 hours at ambient temperature($20 \pm 5^\circ\text{C}$). For large cell and batteries the duration of exposure to the test temperature extremes should be at least 12 hours.

3. Vibration

Cells and batteries are firmly secured to the platform of the vibration machine without distorting the cells in such a manner as to faithfully transmit the vibration. The vibration shall be a sinusoidal waveform with a logarithmic sweep between 7 Hz and 200 Hz and back to 7 Hz traversed in 15minutes. This cycle shall be repeated 12 times for a total of 3 hours for each of three mutually perpendicular mounting positions of the cell. One of the directions of vibration must be perpendicular to the terminal face.

The logarithmic frequency sweep is as follows: from 7 Hz a peak acceleration of 1 g is maintained until 18 Hz is reached. The amplitude is then maintained at 0.8 mm (1.6 mm total excursion) and the frequency increased until a peak acceleration of 8 g occurs (approximately 50 Hz). A peak acceleration of 8 g is then maintained until the frequency is increased to 200 Hz.

本检测单位保证检测的客观公正性，并对委托单位的商业秘密履行保密义务；委托单位对样品的代表性和资料的真实性负责，本检测单位仅对样品负责，委托单位对于检测结果的使用、使用所产生的直接或间接损失及一切法律后果，本检测单位不承担任何经济和法律责任；本《检测报告》如无PONY专用章和批准人签字或被复制，则无效；任何对本《检测报告》未经授权的部分或全部转载、篡改、伪造或复制行为都是违法的，将被追究民事、行政甚至刑事责任。

防伪说明：(1)《检测报告》的报告编号是唯一的，即每一个报告编号只对应唯一的《检测报告》；
(2)《检测报告》采用特制防伪纸张印制，纸张表面带有“PONY”防伪纹路，该防伪纹路不支持复印，即复制件不会带有“PONY”防伪纹路；
(3)《检测报告》采用的防伪纸张内部亦加带有高科技“PONY”防伪水印，只有在验钞机等紫外线照射下方可显出无色荧光防伪字样；
(4)《检测报告》所盖防伪骑缝章中的一部分加盖于本检测单位的留底报告上，《检测报告》与本检测单位留底报告的骑缝章应拼合完整无缺。

www.ponytest.com ☎Hotline 400-819-5688

Add: Yingzhi Building, No.49-3, Suzhou Road, Haidian District, Beijing	Building 25, No.680, Guiping Road, Xuhui District, Shanghai	Building 60 of Zhongxing Industry City, Chuangye Road, Nanshan District, Shenzhen	No.2-1, Keyuan Wei Road 3, Hi-tech Park, Laoshan District, Qingdao
Tel: (010)82618116	(021)64851999	(0755)26050909	(0532)88706866
Fax: (010)82619629	(021)64856403	(0755)26068336	(0532)88706877
E-mail: pony@ponytest.com	cs@ponytest.com	sz@ponytest.com	qd@ponytest.com



Pony Testing International Group

4. Shock

Test cells and batteries shall be secured to the testing machine by means of a rigid mount, which will support all mounting surfaces of each test battery. Each cell or battery shall be subjected to a half-sine shock of peak acceleration of 150 g and pulse duration of 6 milliseconds. Each cell or battery shall be subjected to three shocks in the positive direction followed by three shocks in the negative direction of three mutually perpendicular mounting positions of the cell or battery for a total of 18 shocks.

5. External short circuit

The cell and battery to be tested shall be temperature stabilized so that its external case temperature reaches $55 \pm 2^\circ\text{C}$ and then the cell or battery shall be subjected to a short circuit condition with a total external resistance of less than 0.1 ohm at $55 \pm 2^\circ\text{C}$. This short circuit condition is continued for at least one hour after the cell or battery external case temperature has returned to $55 \pm 2^\circ\text{C}$. The cell or battery must be observed for a further six hours for the test to conclude.

Cells and batteries meet this requirement if their temperature does not exceed 170°C and there is no disassembly, no rupture and no fire within six hours of this test.

6. Impact (for component cell)

The test sample cell or component cell is to be placed on a flat surface. A 15.8 mm diameter bar is to be placed across the center of the sample. A 9.1 kg mass is to be dropped from a height of 61 ± 2.5 cm onto the sample.

A cylindrical or prismatic cell is to be impacted with its longitudinal axis parallel to the flat surface and perpendicular to the longitudinal axis of the 15.8 mm diameter curved surface lying across the center of the test sample. A prismatic cell is also to be rotated 90 degrees around its longitudinal axis so that both the wide and narrow side will be subjected to the impact. Each sample is to be subjected to only a single impact; Separate samples are to be used for each impact.

Cells and component cells meet this requirement if their external temperature does not exceed 170°C and there is no disassembly and no fire within six hours of this test.

7. Overcharge

The charge current shall be twice the manufacturer's recommended maximum continuous charge current. The minimum voltage of the test shall be as follows:

- When the manufacturer's recommended charge voltage is not more than 18V, the minimum voltage of the test shall be the lesser of two times the maximum charge of the battery or 22V.
- When the manufacturer's recommended charge voltage is more than 18V, the minimum voltage of the test shall be 1.2 times the maximum charge voltage.

Tests are to be conducted at ambient temperature; the duration of the test shall be 24 hours.

Rechargeable batteries meet this requirement if there is no disassembly and no fire within seven days of the test.

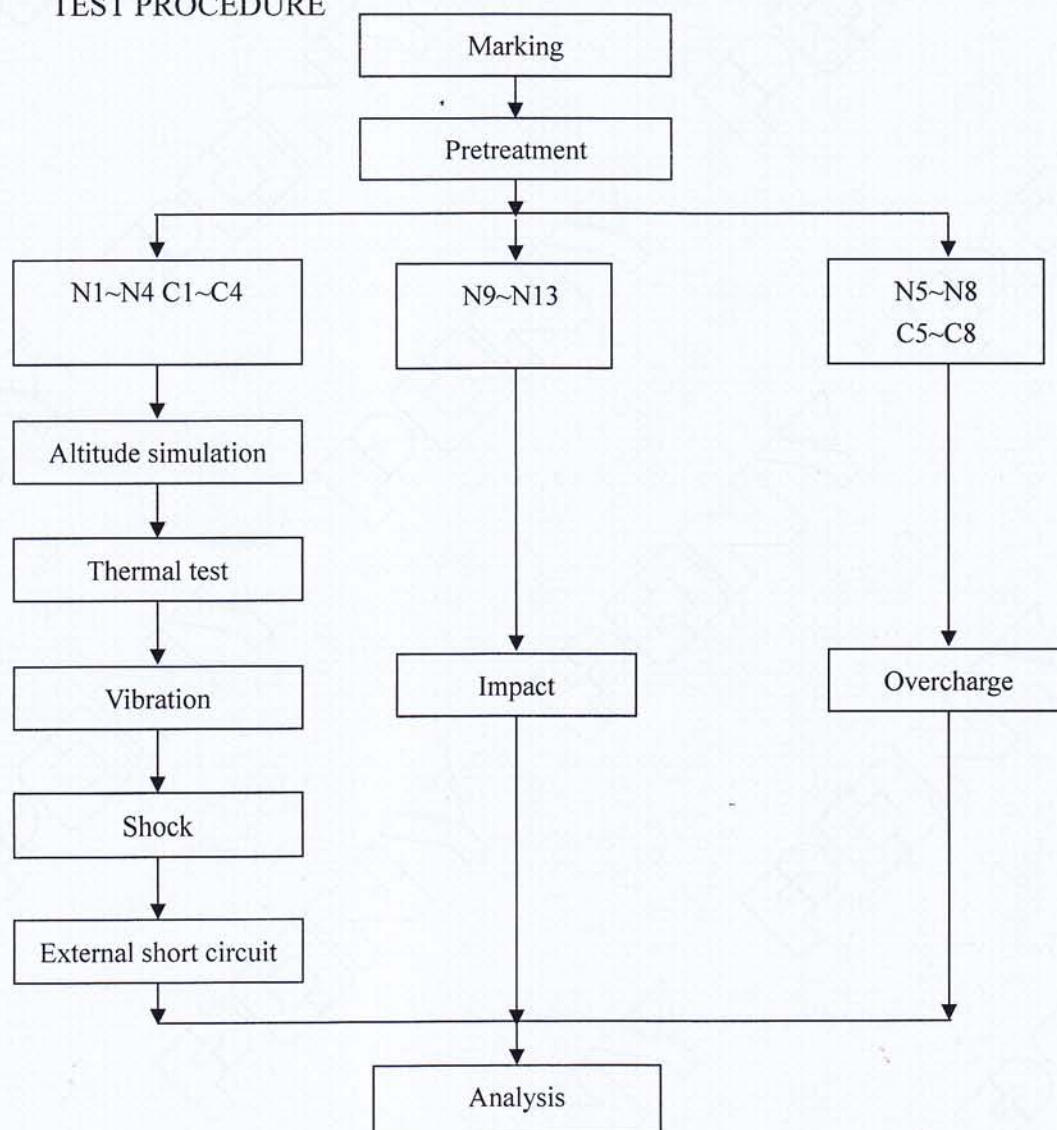
本检测单位保证检测的客观公正性，并对委托单位的商业秘密履行保密义务；委托单位对样品的代表性和资料的真实性负责，本检测单位仅对样品负责，委托单位对于检测结果的使用、使用所产生的直接或间接损失及一切法律后果，本检测单位不承担任何经济和法律责任；本《检测报告》如无PONY专用章和批准人签字或被复制，则无效；任何对本《检测报告》未经授权的部分或全部转载、篡改、伪造或复制行为都是违法的，将被追究民事、行政甚至刑事责任。

防伪说明：(1)《检测报告》的报告编号是唯一的，即每一个报告编号仅对应唯一的《检测报告》；
(2)《检测报告》采用特制防伪纸张印制，纸张表面带有“PONY”防伪纹路，该防伪纹路不支持复印，即复印件不会带有“PONY”防伪纹路；
(3)《检测报告》采用的防伪纸张内部亦加带有高科技“PONY”防伪水印，只有在验钞机等紫外线照射下方可显出无色荧光防伪字样；
(4)《检测报告》所盖防伪骑缝章中的一部分加盖于本检测单位的留底报告上，《检测报告》与本检测单位留底报告的骑缝章应拼合完整无缺。



Pony Testing International Group

VII、 TEST PROCEDURE



VIII、 MAIN TEST APPARATUS

SZSB-121 Rechargeable battery test system
 SZSB-120 Temperature circulation chamber
 SZSB-080 Vibration test instrument
 SZSB-077 DC regulated power supply
 SZSB-090 Digital multimeter

SZSB-037 Vacuum desiccation
 SZSB-082 Shock test instrument
 SZSB-081 Impact test instrument
 SZSB-125 Electronic balance
 SZSB-185 Thermoelectric pair

本检测单位保证检测的客观公正性，并对委托单位的商业秘密履行保密义务；委托单位对样品的代表性和资料的真实性负责，本检测单位仅对样品负责，委托单位对于检测结果的使用、使用所产生的直接或间接损失及一切法律后果，本检测单位不承担任何经济和法律后果；本《检测报告》如无PONY专用章和批准人签字或被复制，则无效；任何对本《检测报告》未经授权的部分或全部转载、篡改、伪造或复制行为都是违法的，将被追究民事、行政甚至刑事责任。

防伪说明：(1)《检测报告》的报告编号是唯一的，即每一个报告编号仅对应唯一的《检测报告》；
 (2)《检测报告》采用特制防伪纸张印制，纸张表面带有“PONY”防伪纹路，该防伪纹路不支持复印，即复制件不会带有“PONY”防伪纹路；
 (3)《检测报告》采用的防伪纸张内部亦加带有高科技“PONY”防伪水印，只有在验钞机等紫外线照射下方可显出无色荧光防伪字样；
 (4)《检测报告》所盖防伪骑缝章中的一部分加盖于本检测单位的留底报告上，《检测报告》与本检测单位留底报告的骑缝章应拼合完整无缺。

www.ponytest.com ☎Hotline 400-819-5688

Add: Yingzhi Building, No. 49-3, Suzhou Road, Haidian District, Beijing	Building 35, No. 680, Guiping Road, Xuhui District, Shanghai	Building 60 of Zhongxing Industry City, Chuangye Road, Nanshan District, Shenzhen	No. 2-1, Keyuan Wei Road 3, Hi-tech Park, Laoshan District, Qingdao
Tel: (010)82618116	(021)64851999	(0755)26050909	(0532)88706866
Fax: (010)82619629	(021)64856403	(0755)26068336	(0532)88706877
E-mail: pony@ponytest.com	esh@ponytest.com	sz@ponytest.com	qd@ponytest.com



Pony Testing International Group

IX、 DATA

1. Altitude simulation

No.	Pre-test		After test		Mass loss (%)	Voltage loss (%)	Status
	Mass (g)	Voltage (V)	Mass (g)	Voltage (V)			
N1	48.599	4.17	48.599	4.17	0.000	0.00	PASS
N2	48.521	4.17	48.521	4.17	0.000	0.00	PASS
N3	48.897	4.18	48.896	4.17	0.002	0.24	PASS
N4	48.468	4.17	48.467	4.17	0.002	0.00	PASS
C1	48.492	4.17	48.492	4.17	0.000	0.00	PASS
C2	48.519	4.17	48.519	4.17	0.000	0.00	PASS
C3	48.330	4.18	48.329	4.17	0.002	0.24	PASS
C4	48.618	4.17	48.618	4.17	0.000	0.00	PASS

2. Thermal test

No.	Pre-test		After test		Mass loss (%)	Voltage loss (%)	Status
	Mass (g)	Voltage (V)	Mass (g)	Voltage (V)			
N1	48.599	4.17	48.582	4.12	0.035	1.20	PASS
N2	48.521	4.17	48.505	4.13	0.033	0.96	PASS
N3	48.896	4.17	48.881	4.12	0.031	1.20	PASS
N4	48.467	4.17	48.451	4.12	0.033	1.20	PASS
C1	48.492	4.17	48.479	4.13	0.027	0.96	PASS
C2	48.519	4.17	48.505	4.13	0.029	0.96	PASS
C3	48.329	4.17	48.314	4.12	0.031	1.20	PASS
C4	48.618	4.17	48.600	4.12	0.037	1.20	PASS

本检测单位保证检测的客观公正性，并对委托单位的商业秘密履行保密义务；委托单位对样品的代表性和资料的真实性负责，本检测单位仅对样品负责，委托单位对于检测结果的使用，使用所产生的直接或间接损失及一切法律后果，本检测单位不承担任何经济和法律后果；本《检测报告》如无PONY专用章和批准人签字或被复制，则无效；任何对本《检测报告》未经授权的部分或全部转载、篡改、伪造或复制行为都是违法的，将被追究民事、行政甚至刑事责任。

防伪说明：(1)《检测报告》的报告编号是唯一的，即每一个报告编号仅对应唯一的《检测报告》；
(2)《检测报告》采用特制防伪纸张印制，纸张表面带有“PONY”防伪纹路，该防伪纹路不支持复印，即复制件不会带有“PONY”防伪纹路；
(3)《检测报告》采用的防伪纸张内部亦加带有高科技“PONY”防伪水印，只有在验钞机等紫外线照射下方可显出无色荧光防伪字样；
(4)《检测报告》所盖防伪骑缝章中的一部分加盖于本检测单位的留底报告上，《检测报告》与本检测单位留底报告的骑缝章应拼合完整无缺。

www.ponytest.com ☎Hotline 400-819-5688

Add: Yingzhi Building, No. 49-3, Suzhou Road, Haidian District, Beijing	Add: Building 35, No. 680, Guiping Road, Xuhui District, Shanghai	Add: Building 60 of Zhongxing Industry City, Chuangye Road, Nanshan District, Shenzhen	Add: No. 2-1, Keyuan Wei Road 3, Hi-tech Park, Laoshan District, Qingdao
Tel: (010)82618116	Tel: (021)64851999	Tel: (0755)26050909	Tel: (0532)88706866
Fax: (010)82619629	Fax: (021)64856403	Fax: (0755)26068336	Fax: (0532)88706877
E-mail: pony@ponytest.com	E-mail: csh@ponytest.com	E-mail: sz@ponytest.com	E-mail: qd@ponytest.com



Pony Testing International Group

3. Vibration

No.	Pre-test		After test		Mass loss (%)	Voltage loss (%)	Status
	Mass (g)	Voltage (V)	Mass (g)	Voltage (V)			
N1	48.582	4.12	48.581	4.12	0.002	0.00	PASS
N2	48.505	4.13	48.505	4.12	0.000	0.24	PASS
N3	48.881	4.12	48.881	4.12	0.000	0.00	PASS
N4	48.451	4.12	48.450	4.12	0.002	0.00	PASS
C1	48.479	4.13	48.479	4.13	0.000	0.00	PASS
C2	48.505	4.13	48.504	4.12	0.002	0.24	PASS
C3	48.314	4.12	48.312	4.12	0.004	0.00	PASS
C4	48.600	4.12	48.600	4.12	0.000	0.00	PASS

4. Shock

NO.	Pre-test		After test		Mass loss (%)	Voltage loss (%)	Status
	Mass (g)	Voltage (V)	Mass (g)	Voltage (V)			
N1	48.581	4.12	48.581	4.12	0.000	0.00	PASS
N2	48.505	4.12	48.504	4.11	0.002	0.24	PASS
N3	48.881	4.12	48.881	4.12	0.000	0.00	PASS
N4	48.450	4.12	48.450	4.12	0.000	0.00	PASS
C1	48.479	4.13	48.478	4.12	0.002	0.24	PASS
C2	48.504	4.12	48.504	4.12	0.000	0.00	PASS
C3	48.312	4.12	48.312	4.12	0.000	0.00	PASS
C4	48.600	4.12	48.600	4.12	0.000	0.00	PASS

本检测单位保证检测的客观公正性，并对委托单位的商业秘密履行保密义务；委托单位对样品的代表性和资料的真实性负责，本检测单位仅对样品负责，委托单位对于检测结果的使用、使用所产生的直接或间接损失及一切法律后果，本检测单位不承担任何经济和法律责任；本《检测报告》如无PONY专用章和批准人签字或被复制，则无效；任何对本《检测报告》未经授权的部分或全部转载、篡改、伪造或复制行为都是违法的，将被追究民事、行政甚至刑事责任。

防伪说明：(1)《检测报告》的报告编号是唯一的，即每一个报告编号仅对应唯一的《检测报告》；
(2)《检测报告》采用特制防伪纸张印制，纸张表面带有“PONY”防伪纹路，该防伪纹路不支持复印，即复制件不会带有“PONY”防伪纹路；
(3)《检测报告》采用的防伪纸张内部亦加带有高科技“PONY”防伪水印，只有在验钞机等紫外线照射下方可显出无色荧光防伪字样；
(4)《检测报告》所盖防伪骑缝章中的一部分加盖于本检测单位的留底报告上，《检测报告》与本检测单位留底报告的骑缝章应拼合完整无缺。

www.ponytest.com ☎Hotline 400-819-5688

Add: Yingzhi Building, No. 49-3, Suzhou Road, Haidian District, Beijing Building 35, No. 680, Guiping Road, Xuhui District, Shanghai Building 60 of Zhongxing Industry City, Chuangye Road, Nanshan District, Shenzhen No. 2-1, Keyuan Wei Road, Hi-tech Park, Laoshan District, Qingdao
Tel: (010)82618116 (021)64851999 (0755)26050909 (0532)88706866
Fax: (010)82619629 (021)64856403 (0755)26068336 (0532)88706877
E-mail: pony@ponytest.com csh@ponytest.com sz@ponytest.com qd@ponytest.com



Pony Testing International Group

5. External short circuit

No.	Peak temperature (°C)	Status
N1	55	PASS
N2	56	PASS
N3	59	PASS
N4	58	PASS
C1	55	PASS
C2	57	PASS
C3	55	PASS
C4	56	PASS

6. Impact (for component cell)

No.	Peak temperature (°C)	Status
N9	91	PASS
N10	89	PASS
N11	92	PASS
N12	87	PASS
N13	95	PASS

7. Overcharge

No.	Status
N5	PASS
N6	PASS
N7	PASS
N8	PASS
C5	PASS
C6	PASS
C7	PASS
C8	PASS

8. Forced discharge (for cell)

N/A (Not applicable)

本检测单位保证检测的客观公正性，并对委托单位的商业秘密履行保密义务；委托单位对样品的代表性和资料的真实性负责，本检测单位仅对样品负责，委托单位对于检测结果的使用、使用所产生的直接或间接损失及一切法律后果，本检测单位不承担任何经济和法律后果；本《检测报告》如无PONY专用章和批准人签字或被复制，则无效；任何对本《检测报告》未经授权的部分或全部转载、篡改、伪造或复制行为都是违法的，将被追究民事、行政甚至刑事责任。

防伪说明：(1)《检测报告》的报告编号是唯一的，即每一个报告编号仅对应唯一的《检测报告》；
 (2)《检测报告》采用特制防伪纸张印制，纸张表面带有“PONY”防伪纹路，该防伪纹路不支持复印，即复制件不会带有“PONY”防伪纹路；
 (3)《检测报告》采用的防伪纸张内部亦加带有高科技“PONY”防伪水印，只有在验钞机等紫外线照射下方可显出无色荧光防伪字样；
 (4)《检测报告》所盖防伪骑缝章中的一部分加盖于本检测单位的留底报告上，《检测报告》与本检测单位留底报告的骑缝章应拼合完整无缺。

www.ponytest.com ☎Hotline 400-819-5688

Add: Yingzhi Building, No. 49-3, Suzhou Road, Haidian District, Beijing	Building 35, No. 680, Guiping Road, Xuhui District, Shanghai	Building 60 of Zhongxing Industry City, Chungye Road, Nanshan District, Shenzhen	No. 2-1, Keyuan Wei Road 3, Hi-tech Park, Laoshan District, Qingdao
Tel: (010)82618116	(021)64851999	(0755)26050909	(0532)88706866
Fax: (010)82619629	(021)64856403	(0755)26068336	(0532)88706877
E-mail: pony@ponytest.com	esh@ponytest.com	sz@ponytest.com	qd@ponytest.com